



Handled Materials Reference



**FL Smartcycle
Solutions**

Handled Materials

Electronics Recycling & IT Asset Disposition Reference Guide



Handled Materials Reference

About FL SmartCycle Solutions

FL SmartCycle Solutions provides secure electronics recycling, IT asset disposition (ITAD), business electronics pickup, and responsible e-waste processing services throughout Florida.

Our company specializes in handling computers, servers, networking equipment, laptops, telecommunications equipment, electronic components, and other technology-related materials through secure and environmentally responsible operational practices.

We support businesses, warehouses, schools, offices, and organizations with professional electronics handling services focused on sustainability, operational efficiency, and secure equipment processing.

This document contains examples of materials and electronics commonly handled by FL SmartCycle Solutions.

Core Services

- Electronics Recycling
- IT Asset Disposition (ITAD)
- Business Electronics Pickup
- Secure Data Destruction
- Server & Networking Equipment Handling
- Warehouse & Bulk Electronics Processing

Handled Materials Reference

Material Category 1

Steel Case Electronic
Home Electronics: DVD, VCR, Stereo,
Security Boxes, etc.

Steel Case Electronic



Home Electronics: DVD, VCR, Stereo,
Security Boxes, etc.

Handled Materials Reference

Material Category 2

Docking Stations

Check for mouse and keyboard ports.

Check for video/audio ports.

If stand is attached it must be separated.

Check for ethernet(internet) connection ports.

Docking Stations

Check for mouse and keyboard ports.

Check for video/audio ports.

If stand is attached it must be separated.

Check for ethernet(internet) connection ports.



Handled Materials Reference

Material Category 3

Docking Stands

Generally double level platforms.

Typically heavy plastic, Steel, & aluminum.

Docking Stands



Generally double level platforms.

Typically heavy plastic, Steel, & aluminum.



Handled Materials Reference

Material Category 4

No Heat Sink!

Aluminum Breakage

No Heat Sink!

Handled Materials Reference

Material Category 5

Fans

Fans

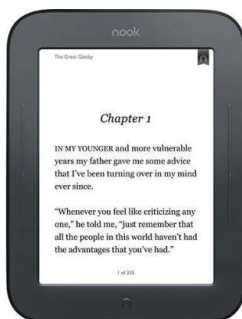


Handled Materials Reference

Material Category 6

Misc LCD Devices
Single Use Tablets
GPS systems w/screen
NOOK, Kindle, E-Reader

Misc LCD Devices



Single Use Tablets
GPS systems w/screen
NOOK, Kindle, E-Reader

Handled Materials Reference

Material Category 7

Breakers
Separate
from Large
and Small

Breakers



Separate
from Large
and Small

Handled Materials Reference

Material Category 8

Doc Cams

Doc Cams



Handled Materials Reference

Material Category 9

LCD Stands

Separate between Steel and Aluminum.

LCD Stands

Separate between Steel and Aluminum.



Handled Materials Reference

Material Category 10

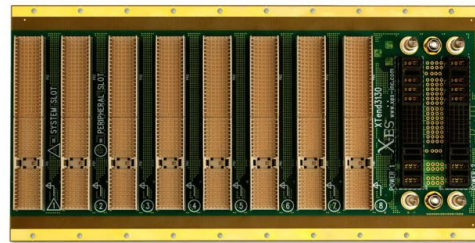
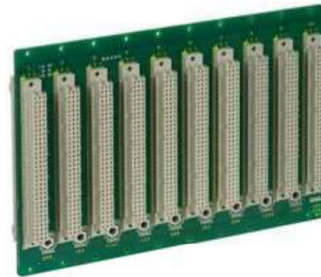
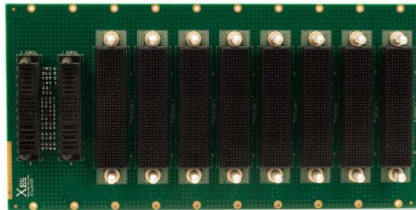
Back Planes

Generally very thick and heavy.

Have gold fingers or multiple connectors.

Back Planes

Generally very thick and heavy.
Have gold fingers or multiple connectors.

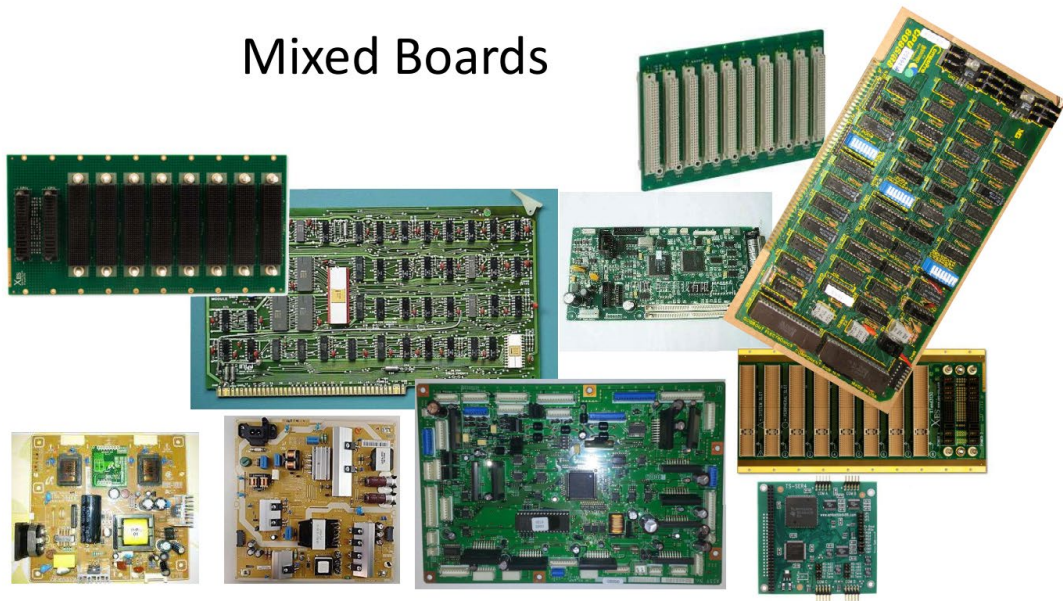


Handled Materials Reference

Material Category 11

Mixed Boards

Mixed Boards



Handled Materials Reference

Material Category 12

Laptops

Must be complete unit cannot be missing screen or keyboard.

Can be with or without battery.

Laptops

Must be complete unit cannot be missing screen or keyboard.

Can be with or without battery.



Handled Materials Reference

Material Category 13

Laptops

Missing one or more components:

Battery, CPU, HDD, and RAM

Laptops

Missing one or more components:

Battery, CPU, HDD, and RAM



Handled Materials Reference

Material Category 14

Projectors

Projectors



Handled Materials Reference

Material Category 15

LCD Monitors
Sort by sizes and test
with flash light.

LCD Monitors

Sort by sizes and test
with flash light.



Handled Materials Reference

Material Category 16

LCD Panels

Any LCD without casing or wires.

Test with flash light. Sort by Size.

LCD Panels



Any LCD without casing or wires.

Test with flash light. Sort by Size.

Handled Materials Reference

Material Category 17

Printer Scrap
Remove Paper, Ink, and Toner.

Printer Scrap

Remove Paper, Ink, and Toner.



Handled Materials Reference

Material Category 18

Palm Planners
Mobile Phone
Separates from with and
without battery

Palm Planners



Mobile Phone

Separates from with and
without battery



Handled Materials Reference

Material Category 19

Game Consoles

Game Consoles



Handled Materials Reference

Material Category 20

Steel Network

Identified by multiple RJ45 jacks

Steel Network



Identified by multiple RJ45 jacks



Handled Materials Reference

Material Category 21

Cable Box W/O HDD

Cable Box W/O HDD



Handled Materials Reference

Material Category 22

Cable Box
Separate between
with and without
Hard Drive

Cable Box



Separate between
with and without
Hard Drive



Handled Materials Reference

Material Category 23

Mixed Motors

Separate between Large and small.

Mixed Motors

Separate between Large and small.





Handled Materials Reference

Material Category 24

To Be Shredded

Handled Materials Reference

Material Category 25

Modem/Router Plastic

Modem/Router Plastic



Handled Materials Reference

Material Category 26

Modem/Router FE Case

Modem/Router FE Case



Handled Materials Reference

Material Category 27

Office Phone

Do not mix with house phone or conference phones.

Office Phone



Do not mix with house phone or conference phones.

Handled Materials Reference

Material Category 28

UPS Plastic

Separate between with and
Without Batteries.

Usually APC brand.

UPS Plastic

Separate between with and
Without Batteries.



Usually APC brand.

Handled Materials Reference

Material Category 29

UPS Plastic W/O Battery

UPS Plastic W/O Battery



Handled Materials Reference

Material Category 30

UPS With Battery

UPS With Battery



Handled Materials Reference

Material Category 31

UPS Steel Case

Usually APC brand.

Separate between with and without battery

UPS Steel Case

Separate between with and without battery



Usually APC brand.



Handled Materials Reference

Material Category 32

UPS Steel W/O Battery

UPS Steel W/O Battery



Handled Materials Reference

Material Category 33

Power Board Green

Must be green on both sides

Power boards have transformers, capacitors, and power connectors.

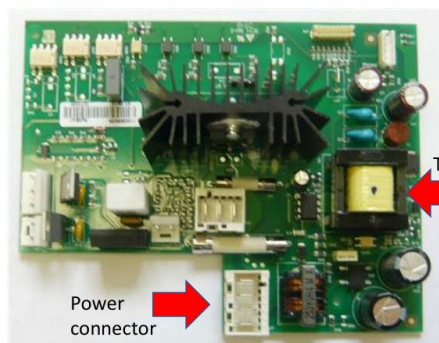
Power
connector

Power
connector

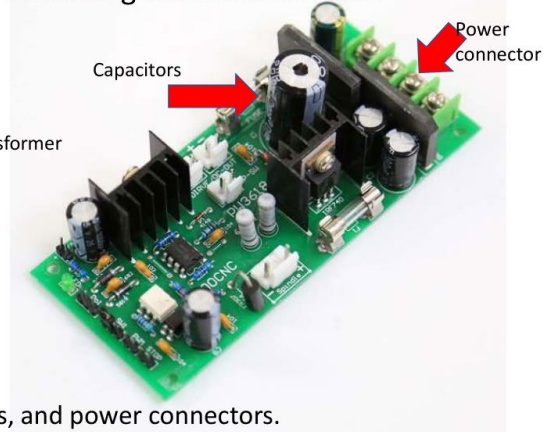
Transformer

Capacitors

Power Board Green



Must be green on both sides



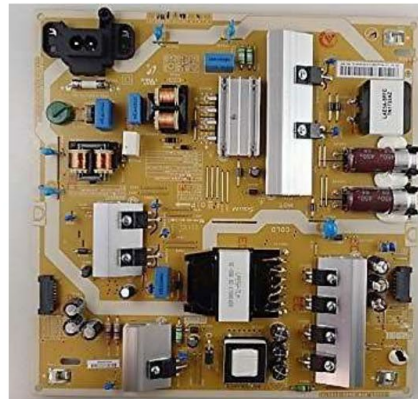
Power boards have transformers, capacitors, and power connectors.

Handled Materials Reference

Material Category 34

Power Board Brown

Power Board Brown



Handled Materials Reference

Material Category 35

Mid Grade Board

Partial populated with IC chips

Mid Grade Board



Partial populated with IC chips



Handled Materials Reference

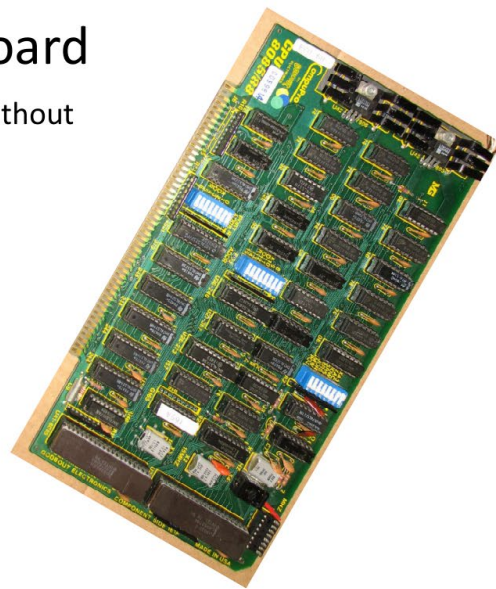
Material Category 36

H/G Grade Board

Heavy populated with IC chips with or without gold trims and fingers.

H/G Grade Board

Heavy populated with IC chips with or without gold trims and fingers.



Handled Materials Reference

Material Category 37

Surge Protector W/Wire

Surge Protector W/Wire



Handled Materials Reference

Material Category 38

Power Strip W/Wire

Power Strip W/Wire



Handled Materials Reference

Material Category 39

Misc Terminals

Misc Terminals



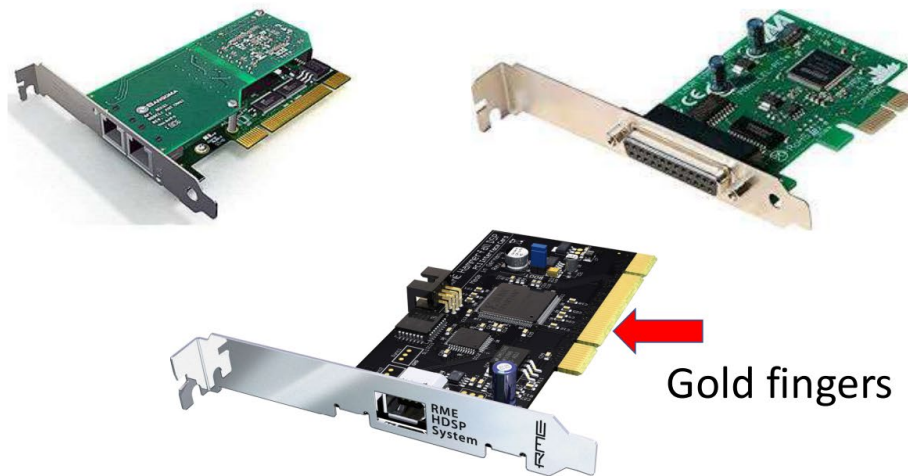
Handled Materials Reference

Material Category 40

Finger Cards

Gold fingers

Finger Cards



Handled Materials Reference

Material Category 41

Christmas Lights

Large ornaments needs to be removed.

Christmas Lights

Large ornaments needs to be removed.



Handled Materials Reference

Material Category 42

P4 Mother Boards

P4 – GREEN (MUST BE GREEN ON BOTH SIDE)

P4- COLOR (ANY COLOR THAT ARE NOT GREEN)

P4 – USABLE (L SHAPE SOCKETS)

P4 Mother Boards



P4 – GREEN (MUST BE GREEN ON BOTH SIDE)
P4- COLOR (ANY COLOR THAT ARE NOT GREEN)
P4 – USABLE (L SHAPE SOCKETS)

Handled Materials Reference

Material Category 43

Power Supply W/Wire

Comes from Computer Towers

Power Supply W/Wire



Comes from Computer Towers

Handled Materials Reference

Material Category 44

Power Supply W/O Wire

Will come without wires or wires were cut.

Power Supply W/O Wire



Will come without wires or wires were cut.

Handled Materials Reference

Material Category 45

Server Power Supply

Gold connectors

Gold connectors

Server Power Supply



Gold connectors



Gold connectors

Handled Materials Reference

Material Category 50

Industrial Power Supply

They are very large power supplies

Industrial Power Supply



They are very large power supplies

Handled Materials Reference

Material Category 51

Laptop Media Drive

Usually comes from laptop.

Keep separate if large quantity.

Laptop Media Drive



Usually comes from laptop.

Keep separate if large quantity.

Handled Materials Reference

Material Category 52

Media Drive
CD/DVD – Drive
Floppy Drive
Tape Drive

Media Drive



CD/DVD – Drive
Floppy Drive
Tape Drive

Handled Materials Reference

Material Category 53

Keyboard/Mouse

W/Wire

Do not mix speakers with keyboard and mouse.

Keyboard/Mouse W/Wire



Do not mix speakers with keyboard and mouse.

Handled Materials Reference

Material Category 54

Speakers

Do not mix speakers with keyboard and mouse.

Speakers



Do not mix speakers with keyboard and mouse.

Handled Materials Reference

Material Category 55

Hard Drive W/O Board

Hard Drive W/O Board



Handled Materials Reference

Material Category 56

Hard Drive

Hard Drive



Handled Materials Reference

Material Category 57

Hard Drive Full Board

Hard Drive Full Board



Handled Materials Reference

Material Category 58

Hard Drive W/Caddy

Hard Drive W/Caddy



Handled Materials Reference

Material Category 59

Credit Card Readers

Separate with and without Screens

Credit Card Readers



Separate with and without Screens

Handled Materials Reference

Material Category 60

A/C Adapter W/Wire

A/C Adapter W/Wire



Handled Materials Reference

Material Category 61

30-35% Mixed Wire

MUST COME OUT:

STEEL COAX

FIBER OPTICS

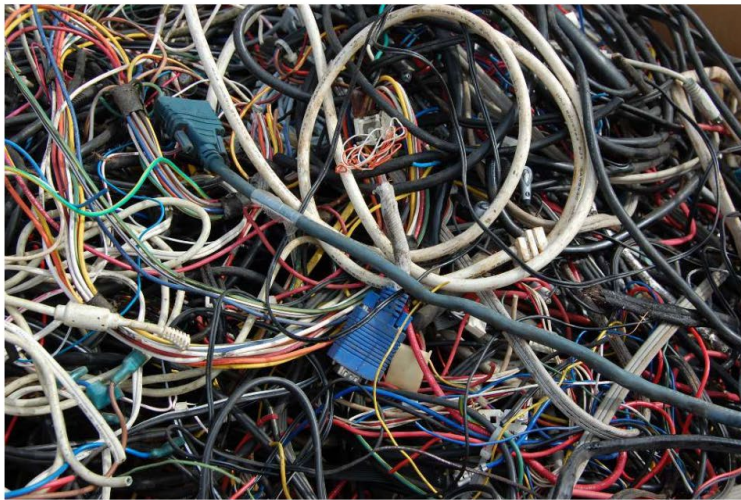
RBG WIRES/VCR WIRE

TELEPHONE WIRE

CAT5/CAT6 IF EASY OR IN

LARGE BUNDLE

30-35% Mixed Wire



MUST COME OUT:

STEEL COAX

FIBER OPTICS

RBG WIRES/VCR WIRE

TELEPHONE WIRE

CAT5/CAT6 IF EASY OR IN

LARGE BUNDLE

Handled Materials Reference

Material Category 62

HG Mixed Wire

40-45% Wire – Cat 5/Cat 6
(Internet Wires)

Not phone wire!

45% or Higher

Single insulated Wires

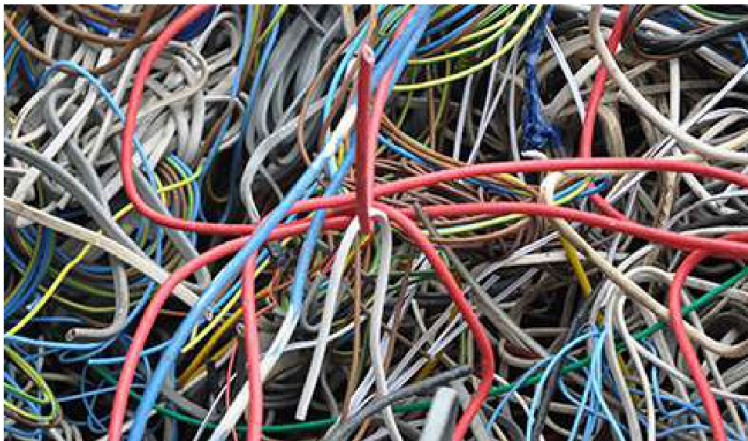
40-45% Wire:

Ribbon – Flat cables

Sata Wire

Do not mix Cat 5/Cat 6, Ribbon, or Single insulated Wires. They must be in their own Category.

HG Mixed Wire



40-45% Wire – Cat 5/Cat 6
(Internet Wires)

Not phone wire!

40-45% Wire:

Ribbon – Flat cables

Sata Wire



45% or Higher

Single insulated Wires

Do not mix Cat 5/Cat 6, Ribbon, or Single insulated Wires. They must be in their own Category.

Handled Materials Reference

Material Category 63

Large Consumer Electronics

Large Consumer Electronics





Handled Materials Reference

Material Category 64

Dismantle



Handled Materials Reference

Material Category 65

Steel



Handled Materials Reference

Material Category 66

Trash



Handled Materials Reference

Material Category 67

Plastic

Handled Materials Reference

Material Category 68

A/C Adapter W/O Wire

Comes without wires or wires were cut.

A/C Adapter W/O Wire



Comes without wires or wires were cut.

Handled Materials Reference

Material Category 69

Low Grade Scanners

Low Grade Scanners



Handled Materials Reference

Material Category 70

High Grade Scanners

High Grade Scanners



Handled Materials Reference

Material Category 71

Cameras

Cameras



Handled Materials Reference

Material Category 72

Computer/PC

Computer complete – Must have all the components e.g. processor, memory, hard drive, power supply, and Mother board.

Computer incomplete – Missing at least one component.

Memory

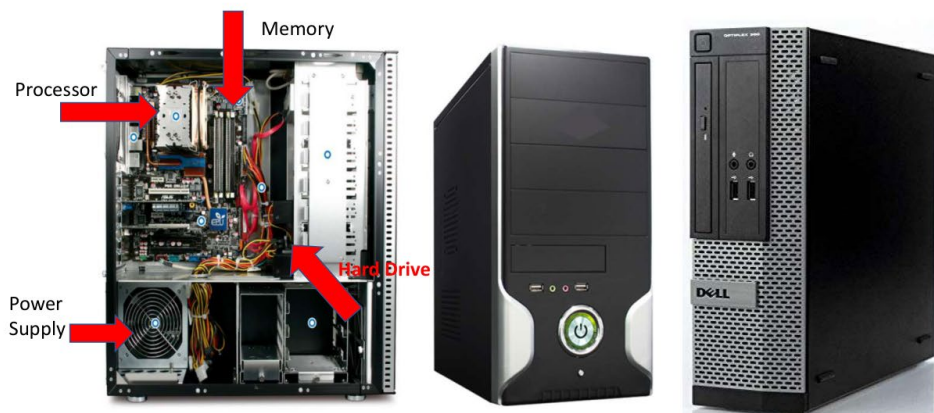
Processor

Power

Supply

Hard Drive

Computer/PC



Computer complete – Must have all the components e.g. processor, memory, hard drive, power supply, and Mother board.

Computer incomplete – Missing at least one component.

Handled Materials Reference

Material Category 73

Blade Server

Less than 2 inches

Server complete

– Must have all the components e.g. processor, memory, hard drive, power supply, and Mother board.

Server incomplete

– Missing at least one component.

Can be mixed in with regular Server if not large quantity.

Blade Server

Can be mixed in with regular Server if not large quantity.

Less than 2 inches



- | | |
|-------------------|--|
| Server complete | – Must have all the components e.g. processor, memory, hard drive, power supply, and Mother board. |
| Server incomplete | – Missing at least one component. |

Handled Materials Reference

Material Category 74

Server

Hard Drives

Video output connections, e.g. HDMI, Display Port,
or VGA

Media Drive

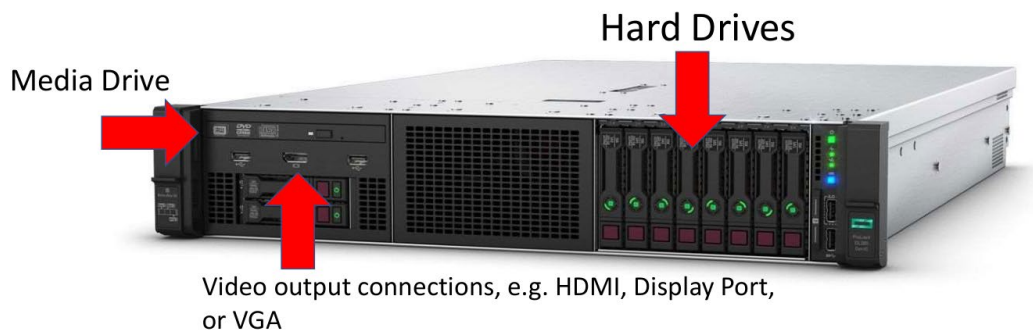
Server complete

– Must have all the components e.g. processor, memory, hard drive,
power supply, and Mother board.

Server incomplete

– Missing at least one component.

Server



Server complete – Must have all the components e.g. processor, memory, hard drive,
power supply, and Mother board.

Server incomplete – Missing at least one component.

Handled Materials Reference

Material Category 75

Server Tower

Will have Xeon Label.

Can be mixed in with regular Server if not large quantity.

Server complete

– Must have all the components e.g. processor, memory, hard drive, power supply, and Mother board.

Server incomplete

– Missing at least one component.

Server Tower



Can be mixed in with regular Server if not large quantity.

Will have Xeon Label.



Server complete

– Must have all the components e.g. processor, memory, hard drive, power supply, and Mother board.

Server incomplete

– Missing at least one component.

Handled Materials Reference

Material Category 76

Drive Array/Stripped Server

Will have back plane.

Does not have:

Media Drive

Video Output Connection

Category – with Hard drives or Empty

Drive Array/Stripped Server



Will have back plane.



Does not have:

Media Drive

Video Output Connection

Category – with Hard drives or Empty